

CHASSIS – PROF 6 ZR CC

| | | | | | |
|----|-----------------------|-----|---|------|------------|
| NO | MMA 01 054 110 | REV | 1 | DATE | 2020/09/02 |
|----|-----------------------|-----|---|------|------------|

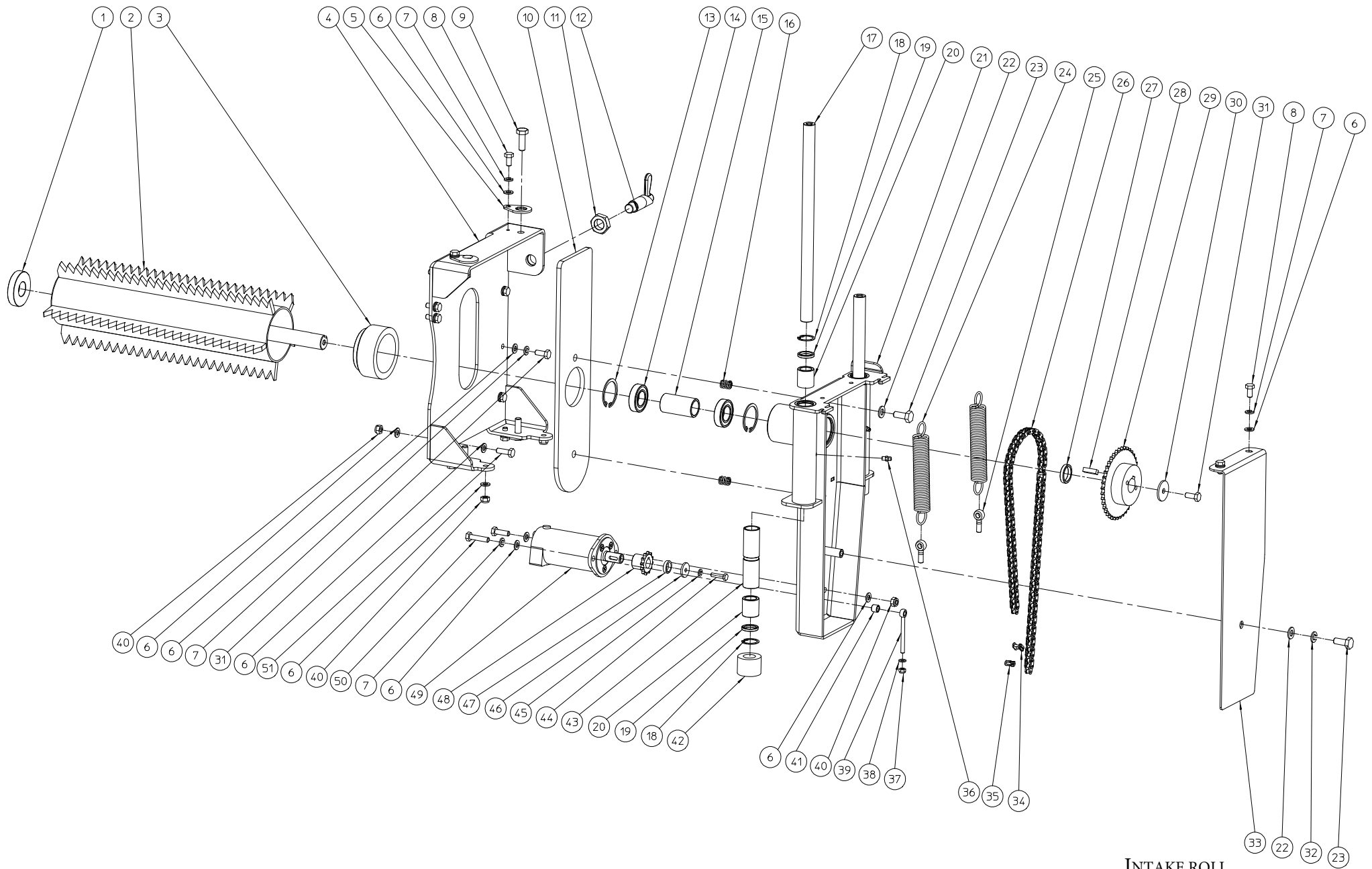
ELIET MANUAL

PROF 6

MMA 01 054 110

CHASSIS - PROF 6 ZR CC

| NUMBER | ARTICLE | DESCRIPTION | QUANTITY |
|--------|----------------|-----------------------------------|----------|
| 1 | BS 512 000 820 | BOLT M8X20 DIN 933 | 12 |
| 2 | BS 533 000 800 | LOCK WASHER M8 DIN 127B | 12 |
| 3 | BS 531 000 800 | WASHER M8 DIN 125 | 18 |
| 4 | MPA 01 054 120 | ANTI-RETURN | 1 |
| 5 | BR 000 212 040 | GROMMETS 120/200/40 | 1 |
| 6 | BS 512 000 620 | BOLT M6X20 DIN 933 | 6 |
| 7 | BS 531 000 600 | WASHER M6 DIN 125 | 14 |
| 8 | MPA 01 054 360 | SUPPORT BATTERY | 1 |
| 9 | BS 502 000 600 | SELF LOCKING NUT M6 DIN 985 | 6 |
| 10 | BS 512 001 050 | BOLT M10X100 DIN 933 | 1 |
| 11 | BS 501 001 000 | NUT M10 DIN 934 | 2 |
| 12 | MPA 01 074 440 | SPACER RING TENSION ENGINE | 2 |
| 13 | BS 511 000 842 | BOLT M8X50 DIN 931 | 1 |
| 14 | MPA 01 054 050 | CHASSIS PROF 6 ZR CC | 1 |
| 15 | BS 512 001 045 | BOLT M10X65 DIN 933 | 1 |
| 16 | BS 501 000 600 | NUT M6 DIN 934 | 2 |
| 17 | MPA 01 054 210 | COUNTRE PLATE SAFETY BAR | 1 |
| 18 | BS 511 000 630 | BOLT M6X30 DIN 931 | 2 |
| 19 | BS 501 901 600 | SELF LOCKING NUT M16 | 1 |
| 20 | BS 501 901 202 | NUT M12X1 DIN 439B | 1 |
| 21 | BS 351 601 624 | SPRING LOADED PLUNJER M16X24 | 1 |
| 22 | BN 000 212 550 | LOCKING BOLTS WITH LOCKING GROOVE | 1 |
| 23 | BS 512 000 812 | BOLT M8X12 DIN 933 | 2 |
| 24 | BS 534 000 800 | LOCK WASHER M8 DIN 6798A | 2 |
| 25 | BR 600 130 301 | ANTIVIBRATION BLOCKS 30X30B M8X16 | 2 |
| 26 | BS 502 000 800 | SELF LOCKING NUT M8 DIN 985 | 3 |
| 27 | MPA 01 054 200 | SAFETY BAR | 1 |
| 28 | MPA 01 054 230 | FRONT FIXATION RUBBER PROTECTION | 1 |
| 29 | BR 902 000 010 | RUBBER PROTECTION | 1 |
| 30 | MPA 01 054 220 | BACK FIXATION RUBBER PROTECTION | 1 |



INTAKE ROLL

| | | | | | | |
|---------------------------|----------------|-----|---|------|------------|--|
| AMENEUR - PROF 6 ZR CC OR | | | | | | |
| NO | MMA 01 054 120 | REV | 1 | DATE | 2020/09/02 | |

ELIET MANUAL

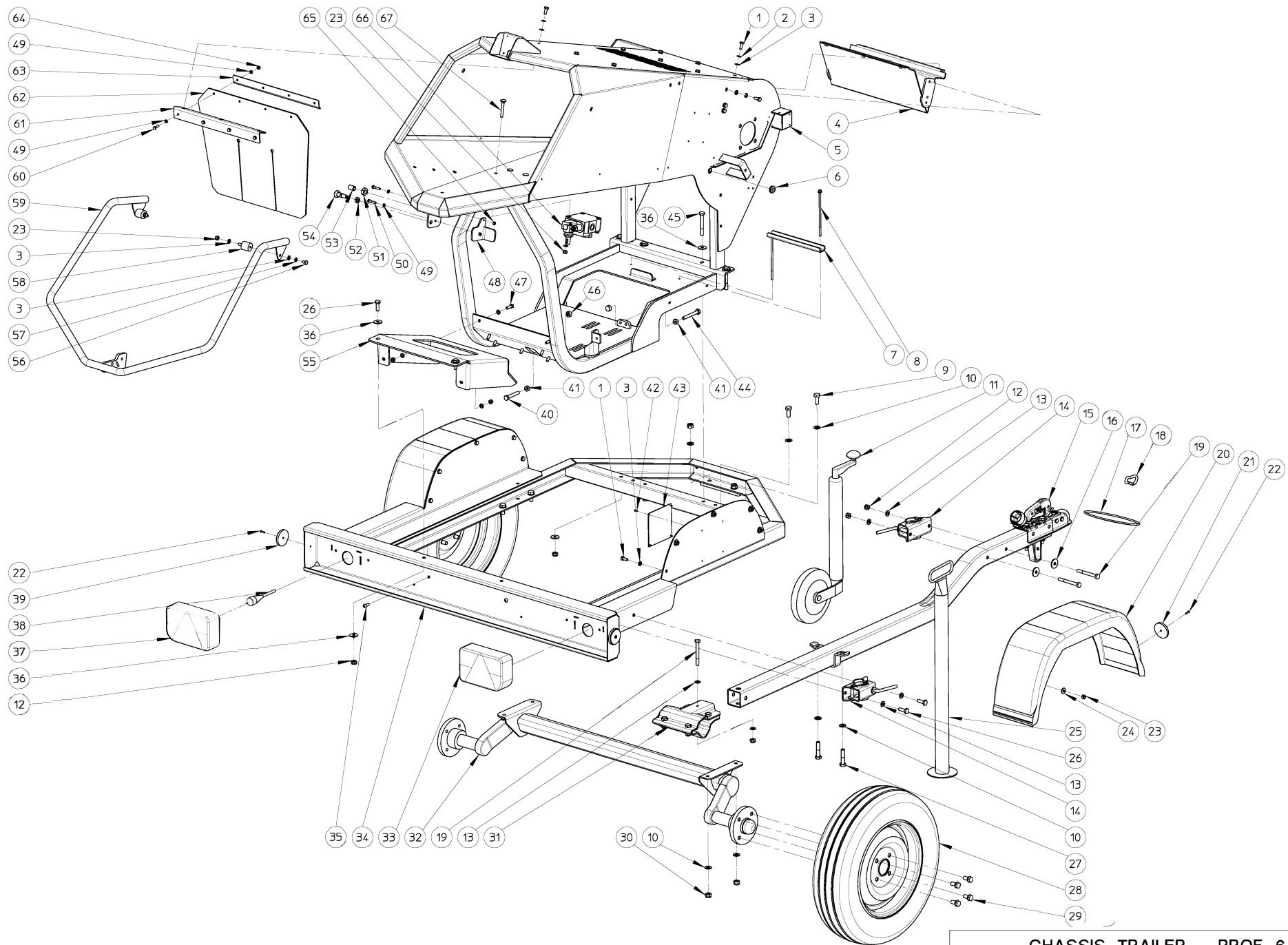
PROF 6

MMA 01 054 120

INTAKE ROLL - PROF 6 ZR CC OR

| NUMBER | ARTICLE | DESCRIPTION | QUANTITY |
|--------|----------------|--|----------|
| 1 | BR 910 000 970 | NYLON GUIDE INTAKE ROLL | 1 |
| 2 | MPA 01 054 060 | INTAKE ROLL | 1 |
| 3 | BR 910 000 980 | NYLON PROTECTION INTAKE ROLL | 1 |
| 4 | MPA 01 054 070 | SUPPORT INTAKE ROLL | 1 |
| 5 | MPA 01 054 750 | FIXATING PLATE - BOLT INTAKE ROLL | 4 |
| 6 | BS 531 000 800 | WASHER M8 DIN 125 | 20 |
| 7 | BS 533 000 800 | LOCK WASHER M8 DIN 127B | 14 |
| 8 | BS 512 000 816 | BOLT M8X16 DIN 933 | 6 |
| 9 | BS 512 001 030 | BOLT M10X30 DIN 933 | 4 |
| 10 | BR 910 001 030 | NYLON COVER PLATE | 1 |
| 11 | BS 501 902 000 | SELF LOCKING NUT K20 | 1 |
| 12 | BO 150 003 150 | PULL LOCK WITH HANDLE 15MM | 1 |
| 13 | BB 002 000 470 | RETAINING RING 32 DIN 472 | 2 |
| 14 | BL 002 504 703 | BEARING 6005 ZZ | 2 |
| 15 | MPA 01 470 430 | SPACER | 1 |
| 16 | BV 911 000 010 | SPRING 14X2X16 | 2 |
| 17 | MPA 01 054 090 | AXLE | 2 |
| 18 | BB 002 000 280 | RETAINING RING 28 DIN 472 | 4 |
| 19 | BR 302 120 284 | SEAL 20X28X4 | 4 |
| 20 | BL 866 010 010 | BRONZE BUSH BEARING FMTC20 | 4 |
| 21 | MPA 01 054 110 | SUPPORT HYDR. ENGINE INTAKE ROLL | 1 |
| 22 | BS 531 001 000 | WASHER M10 DIN 125 | 3 |
| 23 | BS 512 001 025 | BOLT M10X25 DIN 933 | 3 |
| 24 | BV 919 000 010 | SPRING | 2 |
| 25 | BS 551 000 830 | EYE BOLT M8X30 DIN 444 | 2 |
| 26 | BA 101 085 020 | CHAINE | 1 |
| 27 | MPA 01 470 420 | SPACER RING | 1 |
| 28 | BB 341 080 725 | KEY 8X7X25 DIN 6880 | 1 |
| 29 | BA 161 040 251 | SPROCKET SIMPLEX 3/8"X7/32" 40T | 1 |
| 30 | BS 532 008 356 | WASHER M8X35X3 | 1 |
| 31 | BS 512 000 820 | BOLT M8X20 DIN 933 | 8 |
| 32 | BS 533 001 000 | LOCK WASHER M10 DIN 127B | 1 |
| 33 | MPA 01 054 080 | COVER PLATE INTAKE ROLL | 1 |
| 34 | BA 151 200 000 | CONNECTING CHAIN LINK SIMPLEX 3/8"X7/32" | 1 |
| 35 | BA 151 400 000 | CONNECTING CHAIN LINK SIMPLEX (1/2) 3/8" | 1 |
| 36 | BY 100 106 100 | GREASE FITTING M6 DIN 71412 | 2 |
| 37 | BS 502 000 600 | SELF LOCKING NUT M6 DIN 985 | 1 |
| 38 | BS 531 000 600 | WASHER M6 DIN 125 | 1 |
| 39 | BS 551 100 646 | EYE BOLT M6X70 DIN 444 | 1 |
| 40 | BS 502 000 800 | SELF LOCKING NUT M8 DIN 985 | 4 |

| | | | |
|----|----------------|---------------------------------|---|
| 41 | MPA 01 054 810 | SPACER | 1 |
| 42 | BR 900 001 810 | RUBBER SPACER | 2 |
| 43 | MPA 01 054 100 | SPACER BAR | 2 |
| 44 | BS 512 000 625 | BOLT M6X25 DIN 933 | 1 |
| 45 | BS 533 000 600 | LOCK WASHER M6 DIN 127B | 1 |
| 46 | BS 532 006 276 | WASHER M6X27X3 | 1 |
| 47 | MPA 01 054 910 | SPACER HYDR. ENGINE | 1 |
| 48 | BA 161 012 162 | SPROCKET SIMPLEX 3/8"X7/32" 12T | 1 |
| 49 | BH 331 205 000 | HYDRAULIC ENGINE EPMM 50CC | 1 |
| 50 | BS 512 000 835 | BOLT M8X35 DIN 933 | 1 |
| 51 | BS 512 000 825 | BOLT M8X25 DIN 933 | 2 |



CHASSIS TRAILER – PROF 6 OR

| | | | | | |
|----|-----------------------|-----|---|------|------------|
| NO | MMA 01 054 130 | REV | 1 | DATE | 2020/09/02 |
|----|-----------------------|-----|---|------|------------|

ELIET MANUAL

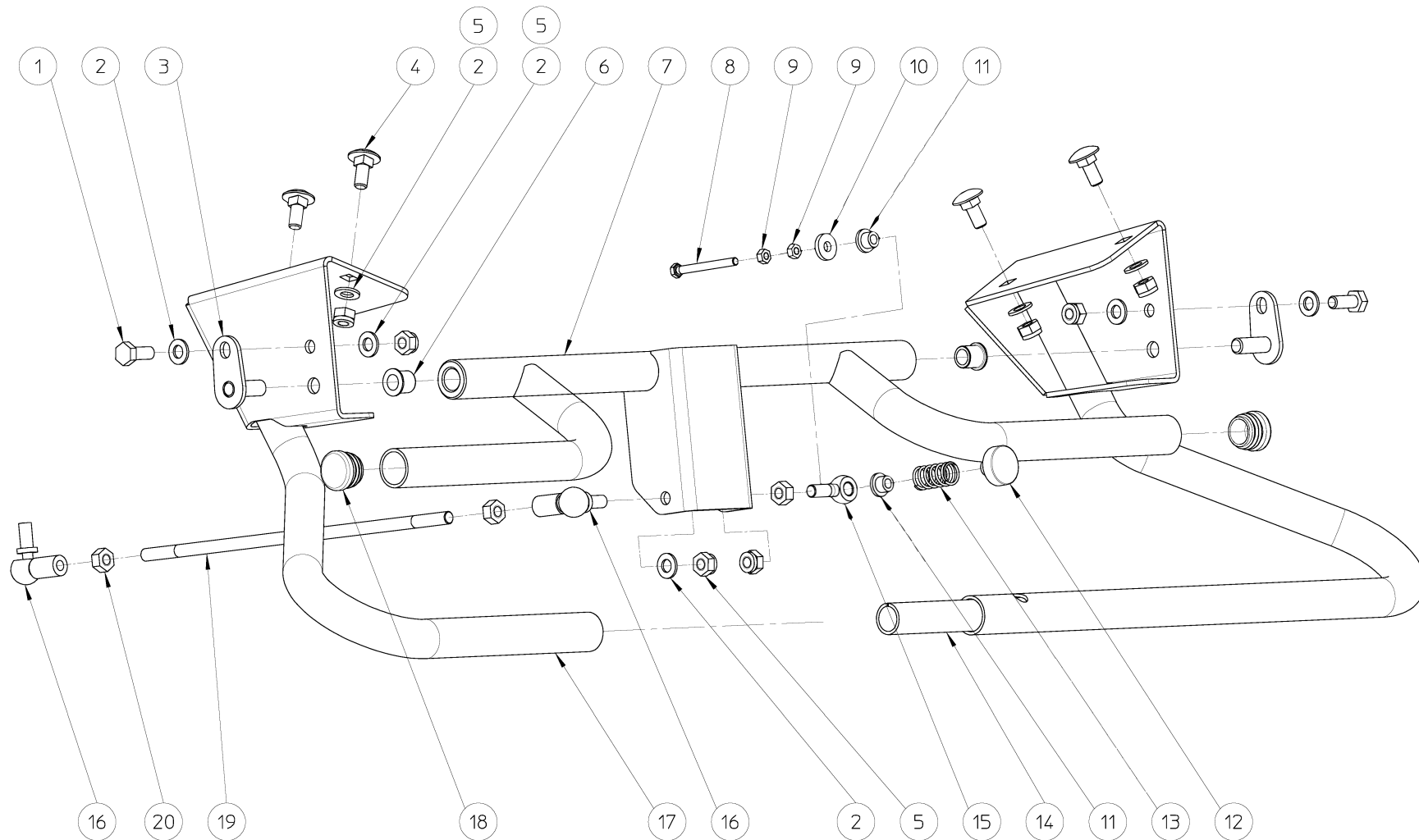
PROF 6

MMA 01 054 130

CHASSIS TRAILER - PROF 6 OR

| NUMBER | ARTICLE | DESCRIPTION | QUANTITY |
|--------|----------------|--------------------------------------|----------|
| 1 | BS 512 000 820 | BOLT M8X20 DIN 933 | 22 |
| 2 | BS 533 000 800 | LOCK WASHER M8 DIN 127B | 12 |
| 3 | BS 531 000 800 | WASHER M8 DIN 125 | 45 |
| 4 | MPA 01 054 120 | ANTI-RETURN | 1 |
| 5 | MPA 01 054 140 | CHASSIS TRAILER | 1 |
| 6 | BR 000 212 040 | GROMMETS 120/200/40 | 1 |
| 7 | MPA 01 054 160 | FIXATING PLATE BATTERY | 1 |
| 8 | BS 511 400 657 | HEXAGON FLANGE BOLTS M6X170 DIN 6921 | 2 |
| 9 | BS 512 001 230 | BOLT M12X30 DIN 933 | 4 |
| 10 | BS 531 001 200 | WASHER M12 DIN 125 | 12 |
| 11 | BY 727 000 100 | SUPPORT WHEEL | 1 |
| 12 | BS 502 001 000 | SELF LOCKING NUT M10 DIN 985 | 11 |
| 13 | BS 531 001 000 | WASHER M10 DIN 125 | 8 |
| 14 | BY 728 010 100 | CLAMP SUPPORT WHEEL | 2 |
| 15 | BY 709 601 004 | TRAILER HANDLEBAR 1850MM | 1 |
| 16 | BS 532 010 356 | WASHER M10X35X3 | 2 |
| 17 | BY 709 601 200 | SECURITY CABLE TRAILER | 1 |
| 18 | BY 522 080 080 | HOOK 80X8MM | 1 |
| 19 | BS 511 001 049 | BOLT M10X90 DIN 931 | 3 |
| 20 | BY 722 400 400 | MUDGUARD TRAILER | 2 |
| 21 | BY 708 112 010 | ROUND REFLECTOR WHITE D60 | 2 |
| 22 | BB 221 104 160 | POP PLUG ALU 3.9X16 DIN 7337 A | 4 |
| 23 | BS 502 000 800 | SELF LOCKING NUT M8 DIN 985 | 24 |
| 24 | BS 532 008 223 | WASHER M8X22X1.5 | 10 |
| 25 | BY 709 600 602 | TRAILER SUPPORT | 1 |
| 26 | BS 512 001 030 | BOLT M10X30 DIN 933 | 4 |
| 27 | BS 511 001 243 | BOLT M12X55 DIN 931 | 2 |
| 28 | BW 054 055 000 | TRAILER TIRE | 2 |
| 29 | BS 512 301 220 | BOLT M12X1.5X20 DIN 961 | 8 |
| 30 | BS 502 001 200 | SELF LOCKING NUT M12 DIN 985 | 6 |
| 31 | BY 709 601 100 | FIXATION TRAILER HANDLEBAR | 1 |
| 32 | BY 726 020 080 | TIRE SUPPORT | 1 |
| 33 | BY 707 120 502 | LIGHT - RIGHT SIDE | 1 |
| 34 | MPA 01 074 030 | CHASSIS TRAILER | 1 |
| 35 | BS 522 500 820 | SCREW M8X20 ISO 7380 | 2 |
| 36 | BS 532 010 305 | WASHER M10X30X2.5 | 12 |
| 37 | BY 707 120 501 | LIGHT - LEFT SIDE | 1 |
| 38 | BY 707 120 503 | CONNECTING CABLE | 1 |
| 39 | BY 708 122 010 | REFLECTOR | 2 |
| 40 | BS 512 001 045 | BOLT M10X65 DIN 933 | 1 |

| | | | |
|----|----------------|-----------------------------------|----|
| 41 | BS 501 001 000 | NUT M10 DIN 934 | 2 |
| 42 | BB 221 103 100 | POP PLUG ALU 3X10 DIN 7337 A | 4 |
| 43 | MPA 01 052 680 | IDENTIFICATION PLATE TRAILER | 1 |
| 44 | BS 512 001 048 | BOLT M10X80 DIN 933 | 1 |
| 45 | BS 511 001 048 | BOLT M10X80 DIN 931 | 4 |
| 46 | MPA 01 074 440 | SPACER RING TENSION ENGINE | 2 |
| 47 | BS 512 000 825 | BOLT M8X25 DIN 933 | 7 |
| 48 | MPA 01 054 210 | COUNTRE PLATE SAFETY BAR | 1 |
| 49 | BS 531 000 600 | WASHER M6 DIN 125 | 10 |
| 50 | BS 511 000 630 | BOLT M6X30 DIN 931 | 2 |
| 51 | BS 501 901 600 | SELF LOCKING NUT M16 | 1 |
| 52 | BS 501 901 202 | NUT M12X1 DIN 439B | 1 |
| 53 | BS 351 601 624 | SPRING LOADED PLUNJER M16X24 | 1 |
| 54 | BN 000 212 550 | LOCKING BOLTS WITH LOCKING GROOVE | 1 |
| 55 | MPA 01 054 150 | CONNECTING PLATE CABLE | 1 |
| 56 | BS 512 000 812 | BOLT M8X12 DIN 933 | 2 |
| 57 | BS 534 000 800 | LOCK WASHER M8 DIN 6798A | 2 |
| 58 | BR 600 130 301 | ANTIVIBRATION BLOCKS 30X30B M8X16 | 2 |
| 59 | MPA 01 054 200 | SAFETY BAR | 1 |
| 60 | BS 512 000 620 | BOLT M6X20 DIN 933 | 4 |
| 61 | MPA 01 054 230 | FRONT FIXATION RUBBER PROTECTION | 1 |
| 62 | BR 902 000 010 | RUBBER PROTECTION | 1 |
| 63 | MPA 01 054 220 | BACK FIXATION RUBBER PROTECTION | 1 |
| 64 | BS 502 000 600 | SELF LOCKING NUT M6 DIN 985 | 4 |
| 65 | BS 501 000 600 | NUT M6 DIN 934 | 2 |
| 66 | BH 400 401 101 | DISTRIBUTION BLOCK | 1 |
| 67 | BS 554 100 844 | BOLT M8X60 DIN603 | 3 |



COMMAND INTAKE ROLL – PROF 6 ZR CC

| | | | | | |
|----|-----------------------|-----|---|------|------------|
| NO | MMA 01 054 140 | REV | 1 | DATE | 2020/09/02 |
|----|-----------------------|-----|---|------|------------|

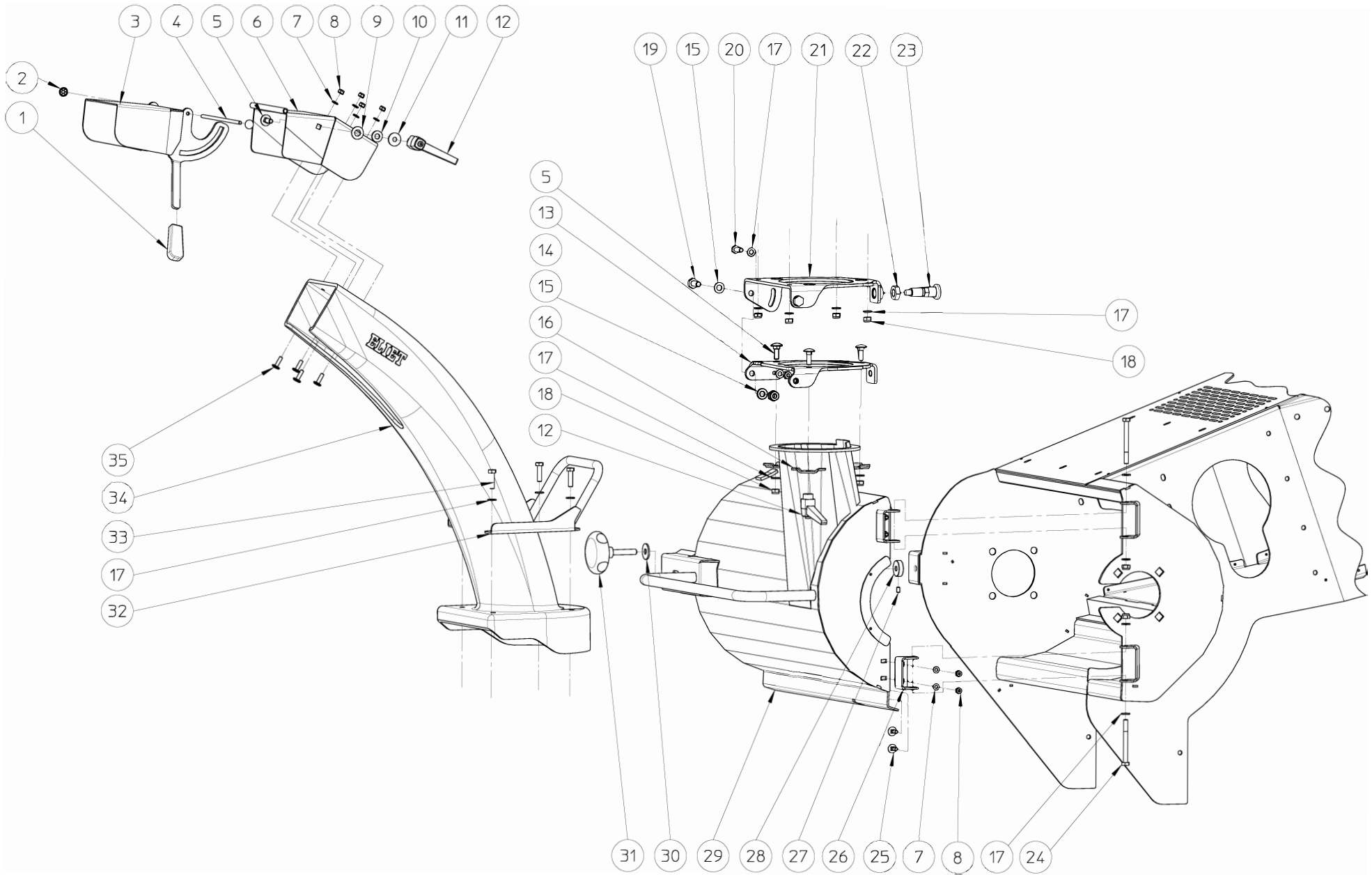
ELIET MANUAL

PROF 6

MMA 01 054 140

COMMAND INTAKE ROLL - PROF 6 ZR CC

| NUMBER | ARTICLE | DESCRIPTION | QUANTITY |
|--------|----------------|--|----------|
| 1 | BS 512 000 820 | BOLT M8X20 DIN 933 | 2 |
| 2 | BS 531 000 800 | WASHER M8 DIN 125 | 9 |
| 3 | MPA 01 440 600 | FIXATION PART | 2 |
| 4 | BS 554 100 820 | BOLT M8X20 DIN 603 | 4 |
| 5 | BS 502 000 800 | SELF LOCKING NUT M8 DIN 985 | 8 |
| 6 | BR 112 101 490 | NYLON BUSHING WITH COLLAR (10/14/17.5x1 | 2 |
| 7 | MPA 01 054 170 | COMMAND INTAKE ROLL | 1 |
| 8 | BS 512 000 542 | BOLT M5 | 1 |
| 9 | BS 501 000 500 | NUT M5 DIN 934 | 2 |
| 10 | BS 531 200 600 | WASHER M6 DIN 7349 | 1 |
| 11 | BR 112 060 800 | NYLON BUSHING WITH COLLAR (6/10/15x8.5/2 | 2 |
| 12 | BE 120 040 070 | MAGNET MAESTRO | 1 |
| 13 | BV 911 000 050 | COMPRESSION SPRING 1.5 X 15 X 28 | 1 |
| 14 | MPA 01 054 180 | TRACTION SUPPORT BAR | 1 |
| 15 | BS 551 000 830 | EYE BOLT M8X30 DIN 444 | 1 |
| 16 | BA 230 010 800 | BALL JOINT M8 | 2 |
| 17 | MPA 01 054 190 | TRACTION SUPPORT BAR | 1 |
| 18 | BR 020 501 250 | TUBE CAP Ø 25MM | 2 |
| 19 | MPA 01 054 870 | COMMAND DISTRIBUTION BLOCK | 1 |
| 20 | BS 501 000 800 | NUT M8 DIN 934 | 3 |



BACK COVER -PROF 6 ZR CC OR

| | | | | | |
|----|----------------|-----|---|------|------------|
| NO | MMA 01 054 160 | REV | 1 | DATE | 2020/07/14 |
|----|----------------|-----|---|------|------------|

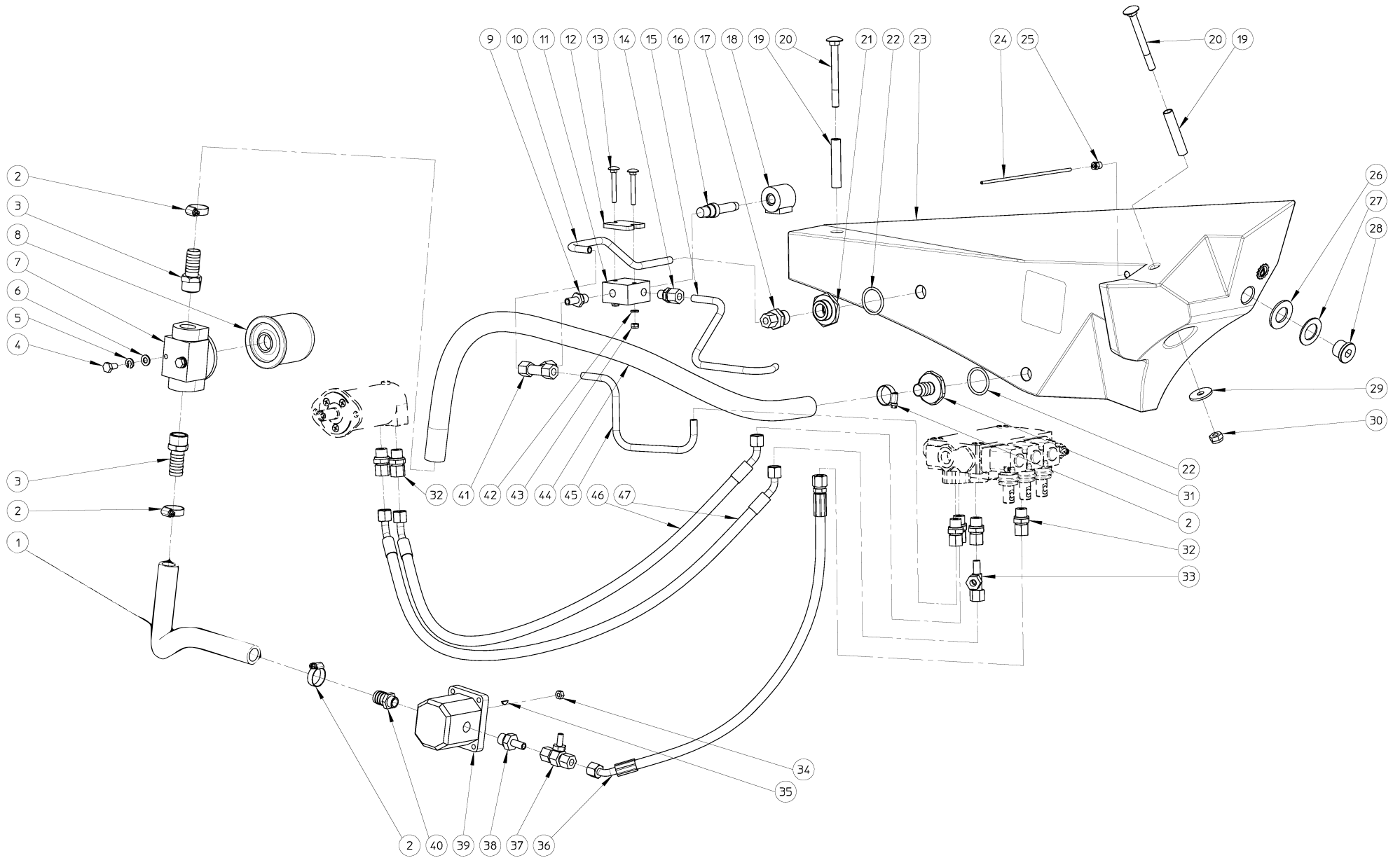
ELIET MANUAL

PROF 6

MMA 01 054 160

BACK COVER - PROF 6 ZR CC

| NUMBER | ARTICLE | DESCRIPTION | QUANTITY |
|--------|----------------|-------------------------------|----------|
| 1 | BN 230 100 202 | PLASTIC HANDGRIPP 15x5x6 PVC | 1 |
| 2 | BB 011 000 060 | STARLOCK 6MM | 2 |
| 3 | MPA 01 054 260 | DISCHARGE DIRECTOR | 1 |
| 4 | MPA 01 052 670 | TUBE FOR DISCHARGE DIRECTOR | 1 |
| 5 | BS 554 100 825 | BOLT M8X25 DIN 603 | 4 |
| 6 | MPA 01 054 290 | SUPPORT DISCHARGE DIRECTOR | 1 |
| 7 | BS 531 000 600 | WASHER M6 DIN 125 | 8 |
| 8 | BS 502 000 600 | SELF LOCKING NUT M6 DIN 985 | 8 |
| 9 | BR 111 120 100 | NYLON BUSHING (12.2X24X1.3) | 1 |
| 10 | BR 111 100 200 | NYLON BUSHING (10.5/21x2.5) | 1 |
| 11 | BS 532 008 253 | WASHER M8X25X1.5 | 1 |
| 12 | BN 530 108 800 | CLAMP LEVERS | 2 |
| 13 | MPA 01 054 280 | ROTATION RING DISCHARGE CHUTE | 1 |
| 14 | BS 502 001 000 | SELF LOCKING NUT M10 DIN 985 | 2 |
| 15 | BS 531 001 000 | WASHER M10 DIN 125 | 4 |
| 16 | MPA 01 073 520 | TUBE CONNECTION | 3 |
| 17 | BS 531 000 800 | WASHER M8 DIN 125 | 16 |
| 18 | BS 502 000 800 | SELF LOCKING NUT M8 DIN 985 | 9 |
| 19 | BS 512 001 025 | BOLT M10X25 DIN 933 | 2 |
| 20 | BS 512 000 825 | BOLT M8X25 DIN 933 | 1 |
| 21 | MPA 01 054 270 | SUPPORT ROTATION RING | 1 |
| 22 | BS 501 901 601 | NUT M16 | 1 |
| 23 | BN 000 216 580 | SELF LOCKING NUT WITH SPRING | 1 |
| 24 | BS 511 000 848 | BOLT M8X80 DIN 931 | 2 |
| 25 | BS 554 100 620 | BOLT M6X20 DIN 603 | 4 |
| 26 | MPA 01 054 980 | HINGE BACK COVER | 2 |
| 27 | BS 023 000 610 | SET SCREW M6X10 DIN 916 | 1 |
| 28 | MPA 01 054 890 | NUT BACK COVER | 1 |
| 29 | MPA 01 054 250 | BACK COVER | 1 |
| 30 | BS 532 010 305 | WASHER M10X30X2.5 | 1 |
| 31 | BN 630 410 420 | LOB KNOW M10 | 1 |
| 32 | MPA 01 073 280 | HANDLE EJECTION | 1 |
| 33 | BS 512 000 830 | BOLT M8X30 DIN 933 | 4 |
| 34 | BR 930 070 010 | DISCHARGE TUNNEL | 1 |
| 35 | BS 552 100 620 | SCREW M12X40 TYPE KF | 4 |



HYDRAULICS – PROF 6 ZR CC OR

| | | | | |
|----|----------------|-----|---|------|
| NO | MMA 01 054 170 | REV | 2 | DATE |
|----|----------------|-----|---|------|

ELIET MANUAL

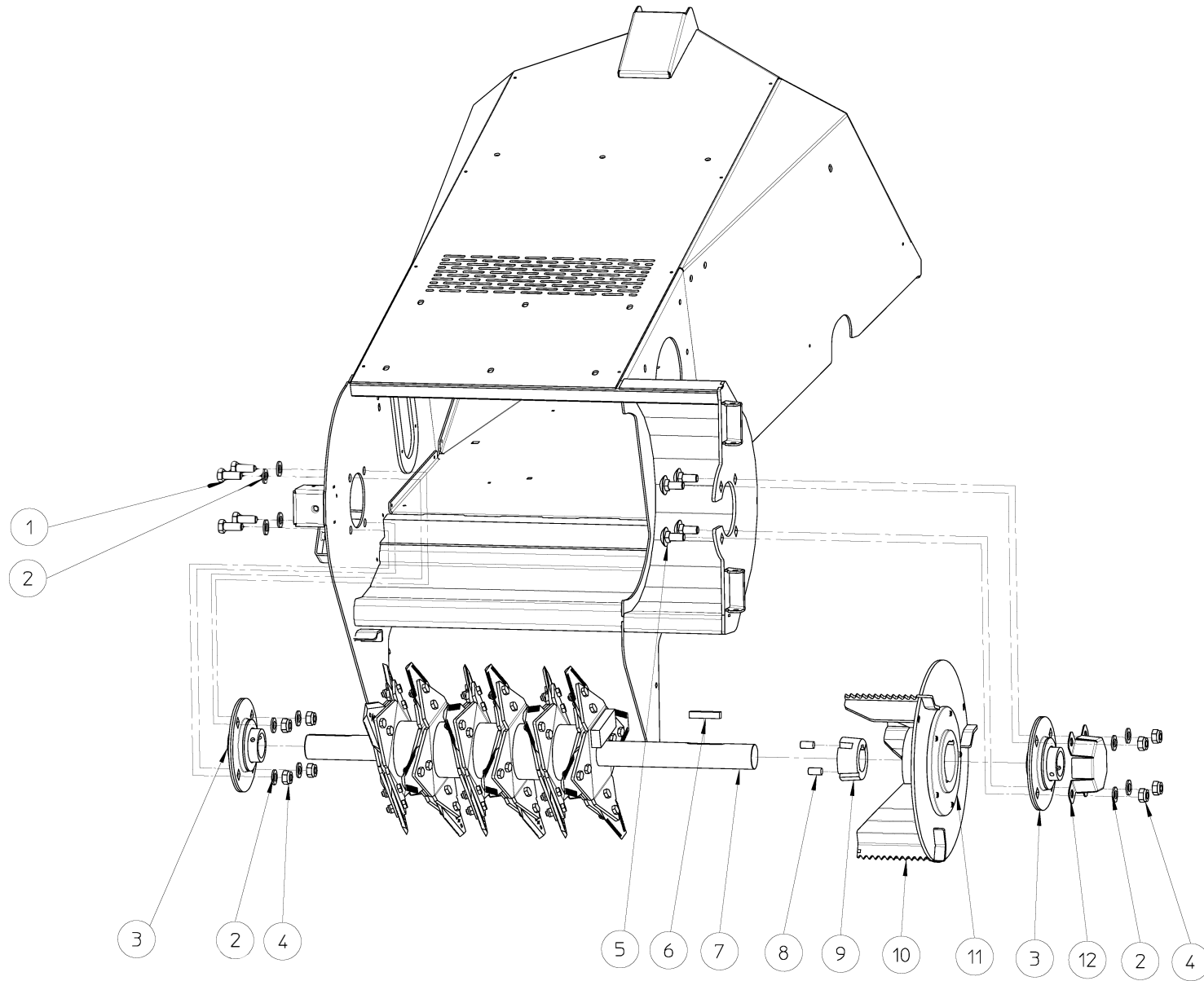
PROF 6

MMA 01 054 170

HYDRAULICS - PROF 6 ZR

| NUMBER | ARTICLE | DESCRIPTION | QUANTITY |
|--------|-----------------|-------------------------------------|----------|
| 1 | BR 212 019 085 | FLEXIBLE HYDRAULICS TUBE 19MM | 1 |
| 2 | BT 670 117 290 | HOSE CLAMP 17X29MM | 4 |
| 3 | BT 136 261 219 | ADAPTOR Ø 19MM - 3/4" | 2 |
| 4 | BS 512 000 816 | BOLT M8X16 DIN 933 | 2 |
| 5 | BS 533 000 800 | LOCK WASHER M8 DIN 127B | 2 |
| 6 | BS 531 000 800 | WASHER M8 DIN 125 | 2 |
| 7 | BH 280 612 120 | SUPPORT HYDRAULIC FILTER 3/4" | 1 |
| 8 | BH 280 212 010 | FIXATION HYDRAULIC FILTER | 1 |
| 9 | BH 512 611 004 | STANDPIPE ADAPTOR 10Lx1/4" | 1 |
| 10 | MPA 01 054 720 | RETURN TUBE | 1 |
| 11 | BH 410 001 610 | ELECTROVANNE | 1 |
| 12 | MPA 01 054 540 | SUPPORT ELECTROVANNE | 1 |
| 13 | BS 554 100 642 | BOLT M6X50 DIN 603 | 2 |
| 14 | BH 509 211 004 | MALE STUD COUPLING 10Lx1/4" | 1 |
| 15 | MPA 01 054 710 | ELECTROVANNE TUBE | 1 |
| 16 | BH 410 001 620 | VALVE ELECTROVANNE | 1 |
| 17 | BH 509 211 008 | MALE STUD COUPLING 10Lx1/2" | 1 |
| 18 | BH 410 001 630 | COIL ELECTROVANNE | 1 |
| 19 | MPA 01 054 530 | TUBE SUPPORT TANK | 2 |
| 20 | BS 554 101 050 | BOLT M10 | 2 |
| 21 | MPA 01 311 360 | CONNECTOR | 1 |
| 22 | BH 812 345 350 | O-RING 34,52 X 3,53 MM VITON | 2 |
| 23 | BY 717 212 010 | HYDR. TANK 10L | 1 |
| 24 | BH 646 020 040 | TUYAU D'HUILE | 1 |
| 25 | BH 642 020 040 | COUPLING | 1 |
| 26 | RDVD 01 054 017 | CAP SEAL | 1 |
| 27 | MPA 01 054 970 | WASHER | 1 |
| 28 | BH 518 501 200 | COUPLING | 1 |
| 29 | BS 532 010 356 | WASHER M10X35X3 | 2 |
| 30 | BS 502 001 000 | SELF LOCKING NUT M10 DIN 985 | 2 |
| 31 | MPA 01 073 890 | ADAPTOR Ø 20MM - 1/2" | 1 |
| 32 | BH 509 211 006 | MALE STUD COUPLING 10Lx3/8" | 6 |
| 33 | BH 512 111 000 | ROTARY L-FITTING FEMALE 10L | 1 |
| 34 | BS 501 000 700 | NUT M7 DIN 934 | 1 |
| 35 | BH 281 201 011 | GEAR WHEEL Z14 25X22 DIN5482 GR 2/1 | 1 |
| 36 | BB 321 020 512 | KEY 2X5X12.65 DIN 6888 | 1 |
| 37 | BH 551 040 630 | TUBE | 1 |
| 38 | BH 563 000 100 | MANOMETER COUPLER 10LxM16x2 | 1 |
| 39 | BH 512 671 006 | STANDPIPE ADAPTOR 10SR3/8" | 1 |
| 40 | BH 210 103 200 | HYDRAULIC PUMP 3.2CC | 1 |

| | | | |
|----|----------------|----------------------------------|---|
| 41 | BT 136 260 620 | CONNECTION | 1 |
| 42 | BH 510 011 000 | EQUAL TEE 10L | 1 |
| 43 | BS 531 000 600 | WASHER M6 DIN 125 | 2 |
| 44 | BS 502 000 600 | SELF LOCKING NUT M6 DIN 985 | 2 |
| 45 | BR 212 019 038 | NYLON NUT M6 | 1 |
| 46 | MPA 01 054 700 | RETURN HYDR. OIL | 1 |
| 47 | BH 551 040 870 | FLEXIBLE HYDRAULIC HOSE 1/4"x870 | 1 |
| 48 | BH 551 040 890 | FLEXIBLE HYDRAULIC HOSE 1/4"x895 | 1 |



ROTOR + IMPELLER - PROF 6 ZR CC OR

| | | | | | |
|----|-----------------------|-----|---|------|------------|
| NO | MMA 01 054 180 | REV | 1 | DATE | 2020/09/02 |
|----|-----------------------|-----|---|------|------------|

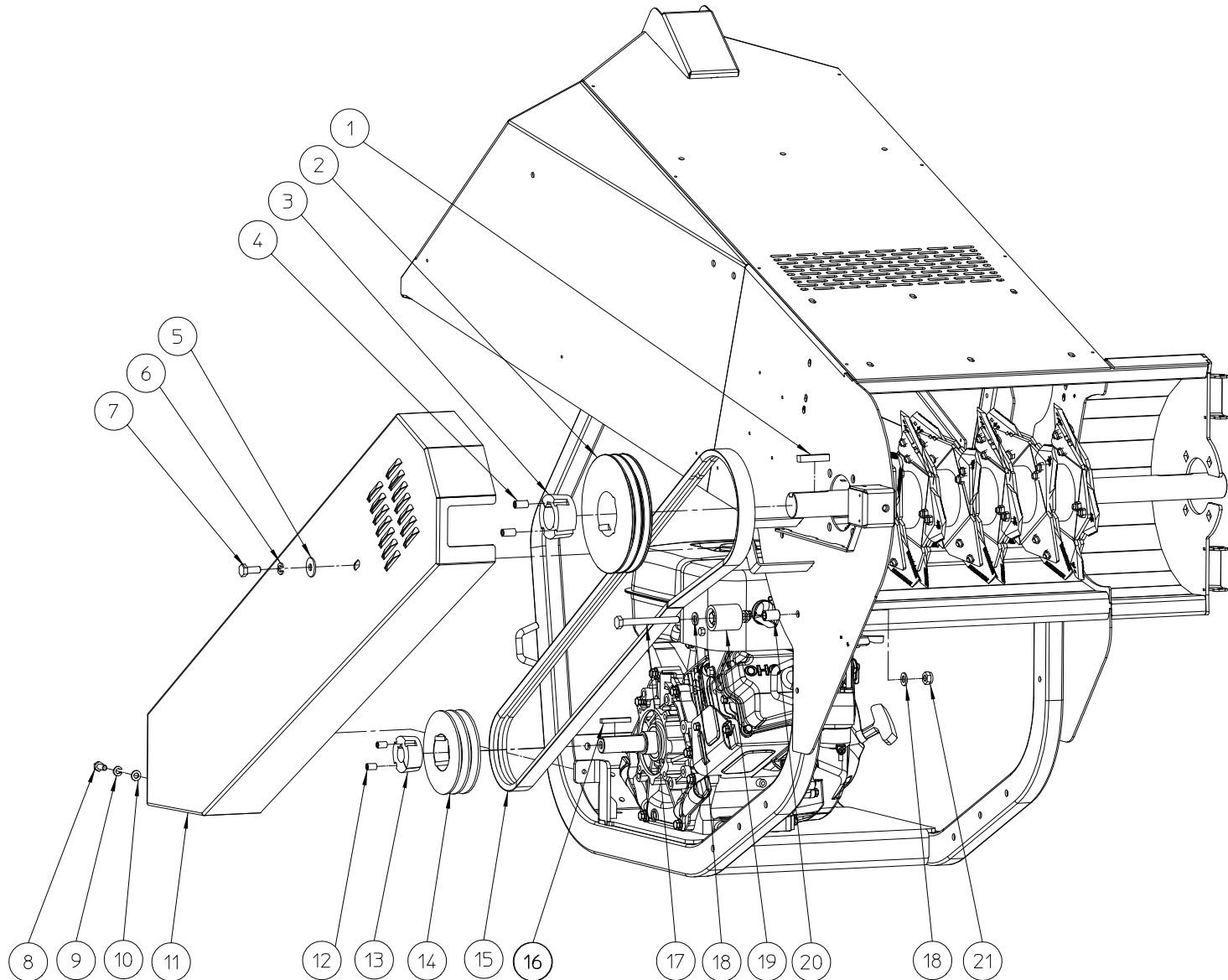
ELIET MANUAL

PROF 6

MMA 01 054 180

ROTOR + IMPELLER - PROF 6

| NUMBER | ARTICLE | DESCRIPTION | QUANTITY |
|--------|----------------|-------------------------------|----------|
| 1 | BS 512 001 230 | BOLT M12X30 DIN 933 | 4 |
| 2 | BS 531 001 200 | WASHER M12 DIN 125 | 12 |
| 3 | BL 801 604 001 | KIT BEARING UCPF 208 COMPLETE | 2 |
| 4 | BS 502 001 200 | SELF LOCKING NUT M12 DIN 985 | 8 |
| 5 | BS 554 101 230 | BOLT M12 | 4 |
| 6 | BB 341 121 050 | KEY DIN 6880 | 1 |
| 7 | MPA 01 054 310 | ROTOR | 1 |
| 8 | BB 501 311 220 | SET SCREW 7/16"X7/8" | 2 |
| 9 | BB 501 154 000 | TAPER LOCK TL 2012-40 | 1 |
| 10 | MPA 01 470 190 | IMPELLER | 1 |
| 11 | BA 281 753 201 | FLANGE Ø175x32 - TL 2012 | 1 |
| 12 | MPA 01 054 580 | PROTECTION BEARING | 1 |



| | | | | |
|-------------------------------|----------------|-----|---|-----------------|
| TRANSMISSION – PROF6 ZR CC OR | | | | |
| NO | MMA 01 054 190 | REV | 1 | DATE 2020/07/09 |

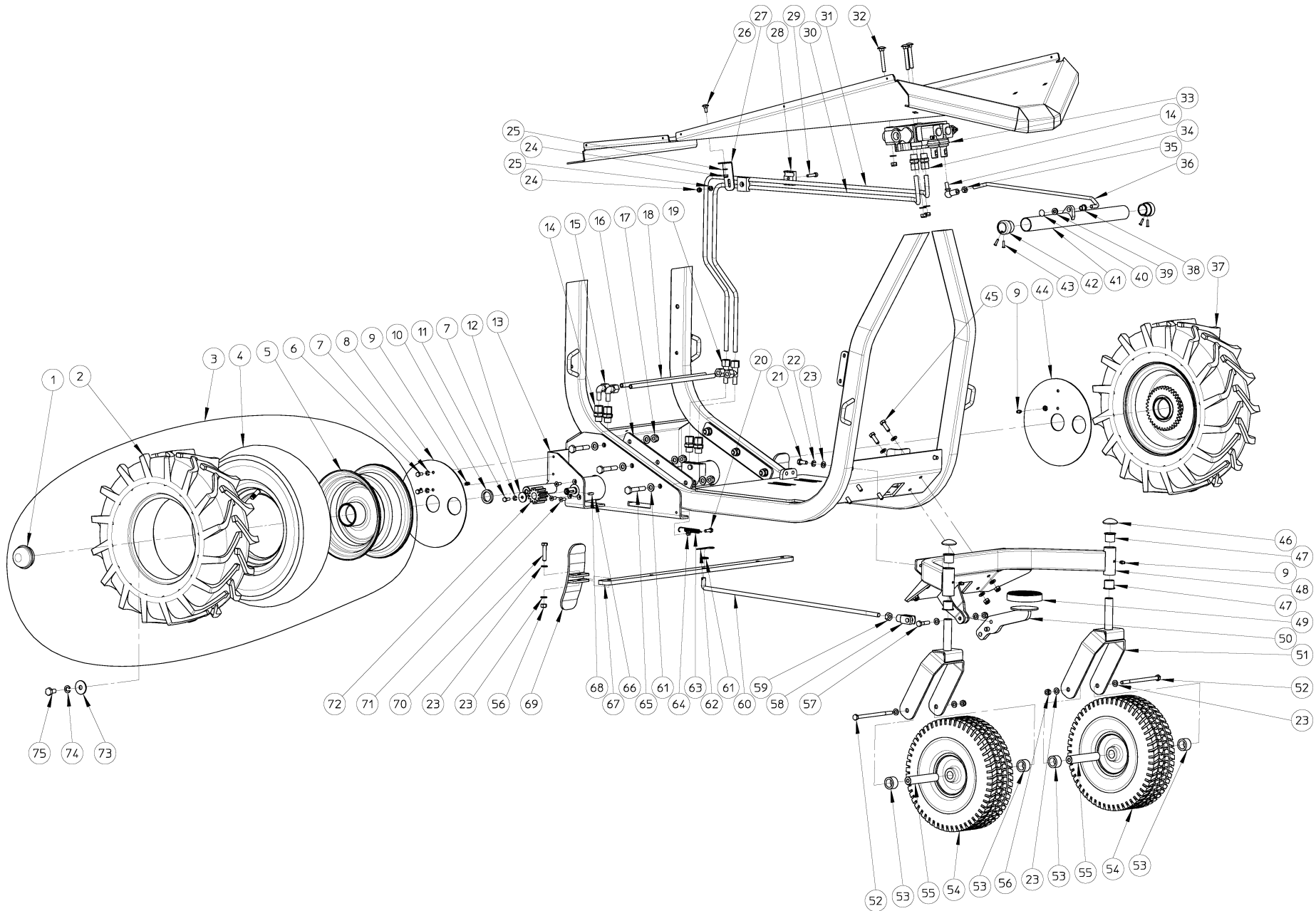
ELIET MANUAL

PROF 6

MMA 01 054 190

TRANSMISSION - PROF 6 ZR CC OR

| NUMBER | ARTICLE | DESCRIPTION | QUANTITY |
|--------|----------------|------------------------------|----------|
| 1 | BB 341 121 050 | KEY DIN 6880 | 1 |
| 2 | BA 562 701 801 | PULLEY SPA 180 | 1 |
| 3 | BB 501 154 000 | TAPER LOCK TL 2012-40 | 1 |
| 4 | BB 501 311 220 | SET SCREW 7/16"X7/8" | 2 |
| 5 | BS 532 010 305 | WASHER M10X30X2.5 | 1 |
| 6 | BS 533 001 000 | LOCK WASHER M10 DIN 127B | 1 |
| 7 | BS 512 001 025 | BOLT M10X25 DIN 933 | 1 |
| 8 | BS 512 000 820 | BOLT M8X20 DIN 933 | 1 |
| 9 | BS 533 000 800 | LOCK WASHER M8 DIN 127B | 1 |
| 10 | BS 531 000 800 | WASHER M8 DIN 125 | 1 |
| 11 | MPA 01 054 320 | PROTECTIVE BELTCOVER | 1 |
| 12 | BB 501 310 160 | SET SCREW 3/8"X5/8" | 2 |
| 13 | BB 501 231 600 | TAPER LOCK TL 1610-1" | 1 |
| 14 | BA 562 701 251 | PULLEY SPA 125 | 1 |
| 15 | BA 552 222 400 | BELT XPA 2240 | 1 |
| 16 | BB 342 060 650 | KEY 6.35X6.35X50 DIN 6880 | 1 |
| 17 | BS 512 001 050 | BOLT M10X100 DIN 933 | 1 |
| 18 | BS 531 001 000 | WASHER M10 DIN 125 | 2 |
| 19 | BA 599 006 200 | BELT GUIDER | 1 |
| 20 | MPA 01 054 820 | SPACER | 1 |
| 21 | BS 502 001 000 | SELF LOCKING NUT M10 DIN 985 | 1 |



CHASSIS LOWER SIDE – PROF 6 ZR

| | | | | | |
|----|----------------|-----|---|------|------------|
| NO | MMA 01 054 200 | REV | 1 | DATE | 2020/07/09 |
|----|----------------|-----|---|------|------------|

ELIET MANUAL

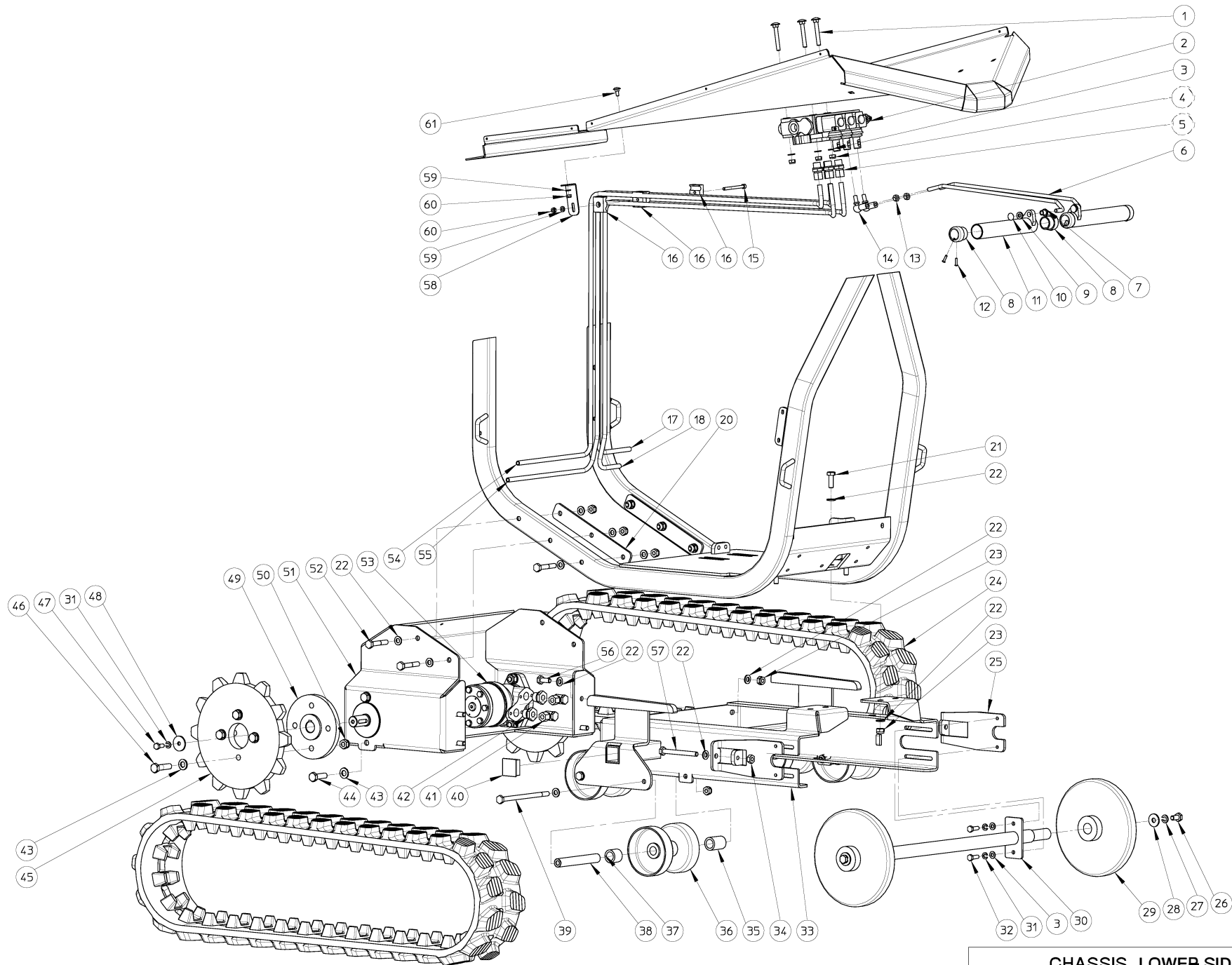
PROF 6

MMA 01 054 200

CHASSIS LOWER SIDE - PROF 6 ZR

| NUMBER | ARTICLE | DESCRIPTION | QUANTITY |
|--------|----------------|---|----------|
| 1 | BY 728 035 520 | WHEEL CAP | 0 |
| 2 | BW 910 430 020 | RUBBER TIRE | 0 |
| 3 | BW 041 025 021 | KIT COMPLETE TIRE | 1 |
| 4 | BW 910 430 030 | INSIDE TIRE | 0 |
| 5 | BW 708 025 070 | DIABOLO | 0 |
| 6 | BS 512 000 614 | BOLT M6X14 DIN 933 | 4 |
| 7 | BS 533 000 600 | LOCK WASHER M6 DIN 127B | 6 |
| 8 | MPA 01 054 340 | PROTECTION TIRE | 1 |
| 9 | BY 100 106 100 | GREASE FITTING M6 DIN 71412 | 4 |
| 10 | MPA 01 054 570 | WASHER | 2 |
| 11 | BS 512 000 616 | BOLT M6X16 DIN 933 | 2 |
| 12 | BS 532 006 276 | WASHER M6X27X3 | 2 |
| 13 | MPA 01 054 370 | SUPPORT PLATE TIRE | 1 |
| 14 | BH 509 211 006 | MALE STUD COUPLING 10Lx3/8" | 6 |
| 15 | BH 511 911 000 | ANGULAR ROTARY FITTING 10L | 2 |
| 16 | MPA 01 054 500 | REINFORCEMENT PLATE | 2 |
| 17 | BS 502 001 000 | SELF LOCKING NUT M10 DIN 985 | 6 |
| 18 | MPA 01 054 440 | HYDRAULIC TUBES | 2 |
| 19 | BH 512 111 000 | ROTARY L-FITTING FEMALE 10L | 2 |
| 20 | BS 512 000 620 | BOLT M6X20 DIN 933 | 2 |
| 21 | BS 512 000 820 | BOLT M8X20 DIN 933 | 2 |
| 22 | BS 533 000 800 | LOCK WASHER M8 DIN 127B | 2 |
| 23 | BS 531 000 800 | WASHER M8 DIN 125 | 25 |
| 24 | BS 502 000 600 | SELF LOCKING NUT M6 DIN 985 | 2 |
| 25 | BS 531 000 600 | WASHER M6 DIN 125 | 2 |
| 26 | BS 554 100 616 | BOLT M6X16 DIN 603 | 1 |
| 27 | MPA 01 051 325 | SUPPORT FIXATION | 1 |
| 28 | BH 711 020 110 | PIPE CLAMP RBPR-110 | 1 |
| 29 | BS 521 100 630 | SCREW M6X30 DIN 912 | 1 |
| 30 | MPA 01 054 430 | HYDRAULIC PIPE | 1 |
| 31 | MPA 01 054 420 | HYDRAULIC PIPE | 1 |
| 32 | BS 554 100 844 | BOLT M8X60 DIN603 | 3 |
| 33 | BH 400 401 201 | DISTRIBUTION BLOCK | 1 |
| 34 | BA 230 010 800 | BALL JOINT M8 | 1 |
| 35 | BS 501 000 800 | NUT M8 DIN 934 | 1 |
| 36 | MPA 01 054 510 | CONTROL ROD DISTR. BLOCK | 1 |
| 37 | BW 041 025 020 | RIGHT TIRE | 1 |
| 38 | BR 112 081 300 | NYLON BUSHING WITH COLLAR (8/11/16x13/2 | 1 |
| 39 | BR 111 080 300 | NYLON BUSHING (8,2/16X3) | 1 |
| 40 | BB 011 000 080 | STARLOCK 8MM | 1 |

| | | | |
|----|----------------|---|----|
| 41 | MPA 01 073 430 | COMMAND TUBE | 1 |
| 42 | BR 910 000 010 | NYLON BUSHING WITH COLLAR (25/30/34x30/ | 2 |
| 43 | BB 221 104 160 | POP PLUG ALU 3.9X16 DIN 7337 A | 4 |
| 44 | MPA 01 054 330 | PROTECTION TIRE | 1 |
| 45 | BS 512 000 825 | BOLT M8X25 DIN 933 | 5 |
| 46 | BB 011 000 200 | STARLOCK 20MM | 2 |
| 47 | BR 112 202 100 | NYLON BUSHING WITH COLLAR (20/24/29x21/ | 4 |
| 48 | MPA 01 054 380 | SUPPORT FRONT TIRES | 1 |
| 49 | BR 900 000 110 | RUBBER SOCKS DIA 90X18MM | 1 |
| 50 | MPA 01 054 350 | BRAKE | 1 |
| 51 | MPA 01 054 410 | FIXATION PART FRONT TIRES | 2 |
| 52 | BS 511 000 854 | BOLT M8X140 DIN 931 | 2 |
| 53 | MPA 01 340 380 | SPACER WHEELSHAFT | 4 |
| 54 | BW 029 020 001 | WHEEL 4.00-4 PROF 5 | 2 |
| 55 | MPA 01 051 175 | WHEEL SHAFT CASTER WHEEL | 2 |
| 56 | BS 502 000 800 | SELF LOCKING NUT M8 DIN 985 | 13 |
| 57 | BS 511 000 835 | BOLT M8X35 DIN 931 | 1 |
| 58 | BS 556 001 000 | FORK M10X20 DIN 71752 | 1 |
| 59 | BS 501 001 000 | NUT M10 DIN 934 | 1 |
| 60 | MPA 01 054 390 | BRAKE TUBE | 1 |
| 61 | BS 531 001 000 | WASHER M10 DIN 125 | 13 |
| 62 | BB 040 102 040 | HAIRPIN COTTER 2MM DIN 11024 | 1 |
| 63 | BV 912 000 030 | SPRING | 2 |
| 64 | BS 501 000 600 | NUT M6 DIN 934 | 2 |
| 65 | BS 511 001 044 | BOLT M10X60 DIN 931 | 6 |
| 66 | BH 331 203 210 | HYDRAULIC ENGINE EPMM 32CC | 2 |
| 67 | MPA 01 054 400 | BRAKE TUBE | 1 |
| 68 | BB 351 050 516 | KEY 5X5X16 DIN 6885A | 2 |
| 69 | MPA 01 070 410 | FOOT BRAKE | 2 |
| 70 | BS 512 000 840 | BOLT M8X40 DIN 933 | 2 |
| 71 | BS 522 100 616 | SCREW M6X16 DIN 7991 | 6 |
| 72 | BA 603 001 201 | GEAR M3 12T | 2 |
| 73 | BS 532 010 355 | WASHER M10X35X2.5 | 2 |
| 74 | BS 533 001 000 | LOCK WASHER M10 DIN 127B | 2 |
| 75 | BS 512 001 020 | BOLT M10X20 DIN 933 | 2 |



CHASSIS LOWER SIDE PROF 6 CC

| | | | | | |
|----|----------------|-----|---|------|------------|
| NO | MMA 01 054 210 | REV | 1 | DATE | 2020/07/09 |
|----|----------------|-----|---|------|------------|

ELIET MANUAL

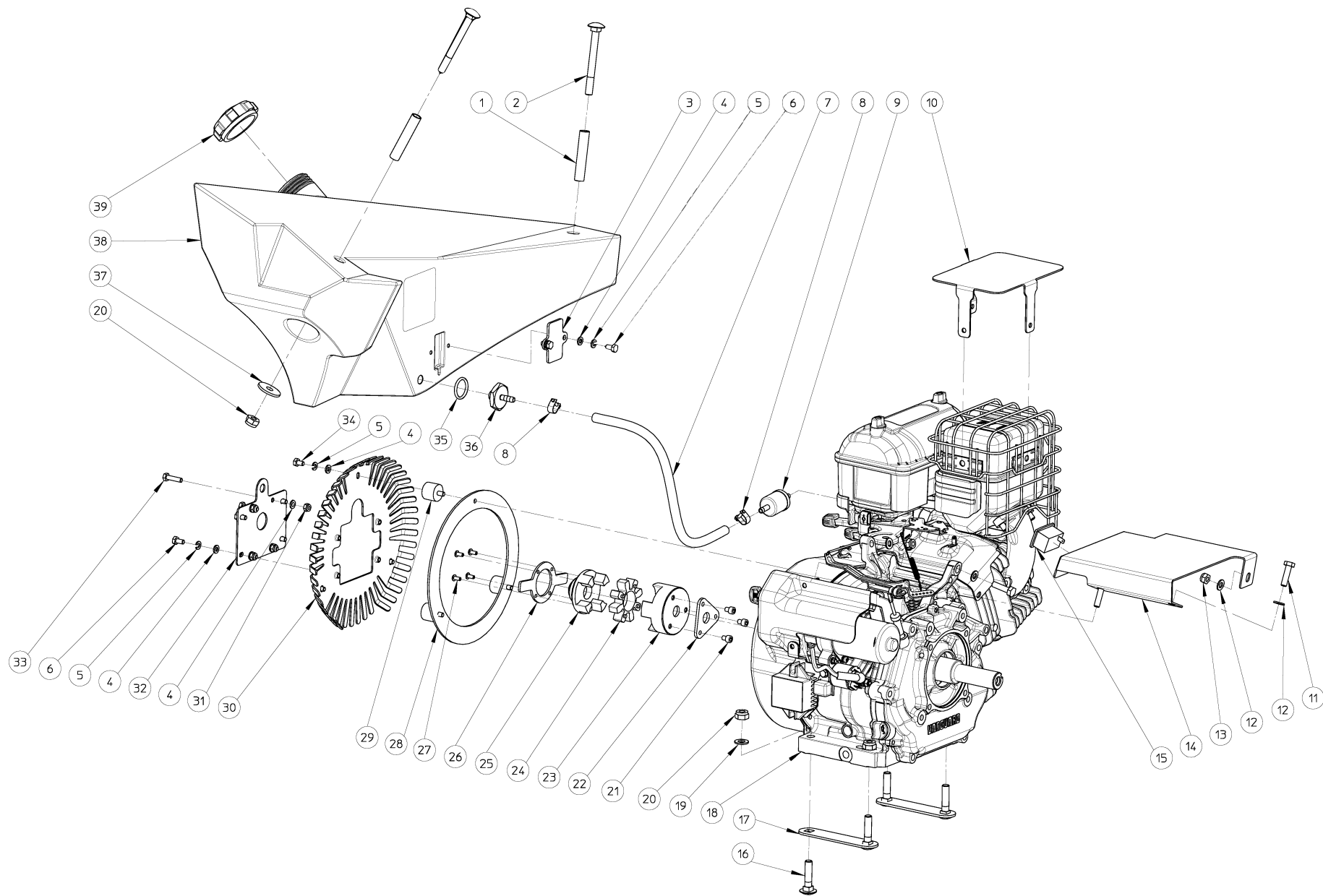
PROF 6

MMA 01 054 210

CHASSIS LOWER SIDE - PROF 6 CC

| NUMBER | ARTICLE | DESCRIPTION | QUANTITY |
|--------|----------------|---|----------|
| 1 | BS 554 100 844 | BOLT M8X60 DIN603 | 3 |
| 2 | BH 400 401 301 | DISTRIBUTION BLOCK | 1 |
| 3 | BS 531 000 800 | WASHER M8 DIN 125 | 7 |
| 4 | BS 502 000 800 | SELF LOCKING NUT M8 DIN 985 | 3 |
| 5 | BH 509 211 006 | MALE STUD COUPLING 10Lx3/8" | 4 |
| 6 | MPA 01 054 510 | CONTROL ROD DISTR. BLOCK | 2 |
| 7 | BR 112 081 300 | NYLON BUSHING WITH COLLAR (8/11/16x13/2 | 2 |
| 8 | BR 910 000 010 | NYLON BUSHING WITH COLLAR (25/30/34x30/ | 4 |
| 9 | BR 111 080 300 | NYLON BUSHING (8,2/16X3) | 2 |
| 10 | BB 011 000 080 | STARLOCK 8MM | 2 |
| 11 | MPA 01 073 440 | CONTROL PIPE CROSS COUNTRY | 2 |
| 12 | BB 221 104 160 | POP PLUG ALU 3.9X16 DIN 7337 A | 8 |
| 13 | BS 501 000 800 | NUT M8 DIN 934 | 2 |
| 14 | BA 230 010 800 | BALL JOINT M8 | 2 |
| 15 | BS 521 100 646 | SCREW M6X70 DIN 912 | 1 |
| 16 | BH 711 020 100 | PIPE CLAMP B-10MM | 2 |
| 17 | MPA 01 054 660 | HYDRAULIC TUBE | 1 |
| 18 | MPA 01 054 670 | HYDRAULIC TUBE | 1 |
| 20 | MPA 01 054 500 | REINFORCEMENT PLATE | 2 |
| 21 | BS 512 001 030 | BOLT M10X30 DIN 933 | 4 |
| 22 | BS 531 001 000 | WASHER M10 DIN 125 | 34 |
| 23 | BS 502 001 000 | SELF LOCKING NUT M10 DIN 985 | 18 |
| 24 | BW 815 072 340 | RUBBER TRACK | 2 |
| 25 | MPA 01 054 470 | SUPPORT TIGHTNER RUBBER TRACK | 2 |
| 26 | BS 512 001 020 | BOLT M10X20 DIN 933 | 2 |
| 27 | BS 533 001 000 | LOCK WASHER M10 DIN 127B | 2 |
| 28 | BS 532 010 305 | WASHER M10X30X2.5 | 2 |
| 29 | BW 622 725 002 | WHEEL | 2 |
| 30 | MPA 01 054 450 | SUPPORT WHEELS | 1 |
| 31 | BS 533 000 800 | LOCK WASHER M8 DIN 127B | 6 |
| 32 | BS 512 000 825 | BOLT M8X25 DIN 933 | 4 |
| 33 | MPA 01 054 490 | SUPPORT | 1 |
| 34 | BS 501 001 000 | NUT M10 DIN 934 | 2 |
| 35 | MPA 01 054 640 | INSIDE SPACER | 4 |
| 36 | BW 611 520 002 | DIABOLO | 4 |
| 37 | MPA 01 054 630 | OUTSIDE SPACER | 4 |
| 38 | MPA 01 054 620 | DIABOLO TUBE | 4 |
| 39 | BS 511 001 057 | BOLT M10 | 4 |
| 40 | BR 021 140 400 | CAP 40X40 | 2 |
| 41 | BH 513 111 004 | BANJO 10Lx1/4" | 4 |

| | | | |
|----|----------------|--------------------------------|----|
| 42 | BH 514 100 804 | REDUCTION STUD (M-F) 1/2"-1/4" | 4 |
| 43 | BS 531 001 200 | WASHER M12 DIN 125 | 16 |
| 44 | BS 512 001 240 | BOLT M12X40 DIN 933 | 4 |
| 45 | MPA 01 054 460 | SPROCKET | 2 |
| 46 | BS 511 001 242 | BOLT M12X50 DIN 931 | 8 |
| 47 | BS 512 000 820 | BOLT M8X20 DIN 933 | 2 |
| 48 | BS 532 008 356 | WASHER M8X35X3 | 2 |
| 49 | BA 281 504 502 | HUB REAR WHEEL Ø12,5MM | 2 |
| 50 | BS 502 001 200 | SELF LOCKING NUT M12 DIN 985 | 12 |
| 51 | MPA 01 054 480 | SUPPORT HYDR. ENGINE | 1 |
| 52 | BS 511 001 044 | BOLT M10X60 DIN 931 | 6 |
| 53 | BH 331 525 000 | HYDRAULIC ENGINE MR N 250 CD | 2 |
| 54 | MPA 01 054 680 | HYDRAULIC TUBE | 1 |
| 55 | MPA 01 054 690 | HYDRAULIC TUBE | 1 |
| 56 | BS 512 001 025 | BOLT M10X25 DIN 933 | 4 |
| 57 | BS 512 001 050 | BOLT M10X100 DIN 933 | 2 |
| 58 | MPA 01 051 325 | SUPPORT FIXATION | 1 |
| 59 | BS 531 000 600 | WASHER M6 DIN 125 | 2 |
| 60 | BS 502 000 600 | SELF LOCKING NUT M6 DIN 985 | 2 |
| 61 | BS 554 100 616 | BOLT M6X16 DIN 603 | 1 |



ENGINE

MOTEUR VANGUARD – PROF 6 ZR CC OR

| | | | | | |
|----|----------------|-----|---|------|------------|
| NO | MMA 01 054 240 | REV | 2 | DATE | 2020/07/13 |
|----|----------------|-----|---|------|------------|

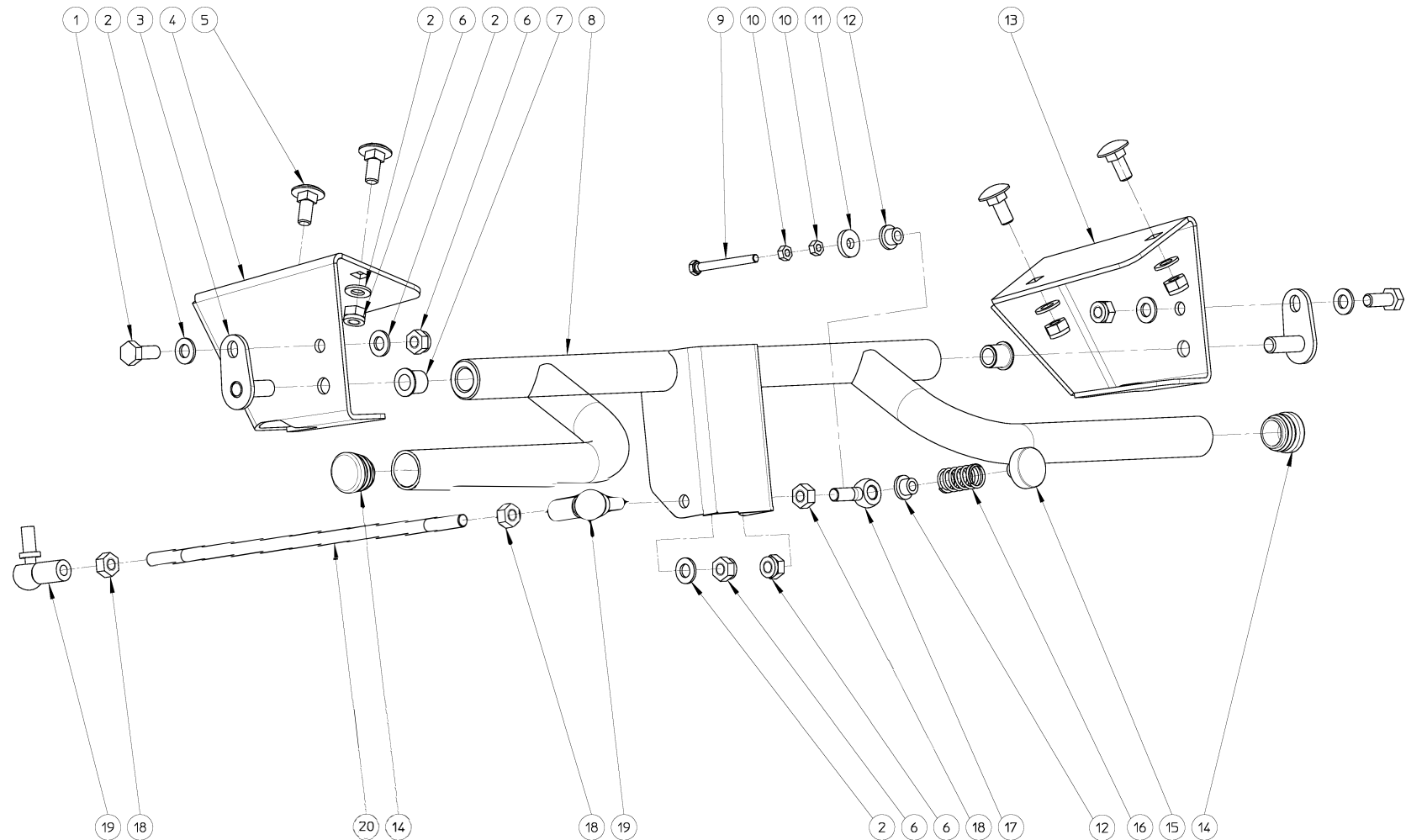
ELIET MANUAL

PROF 6

MMA 01 054 240

ENGINE VANGUARD - PROF 6 ZR CC OR

| NUMERO | ARTICLE | DESCRIPTION | QUANTITÉ |
|--------|----------------|---|----------|
| 1 | MPA 01 054 530 | SPACER | 2 |
| 2 | BS 554 101 050 | BOLT M10 | 2 |
| 3 | BR 910 001 040 | SUPPORT | 1 |
| 4 | BS 531 000 600 | WASHER M6 DIN 125 | 13 |
| 5 | BS 533 000 600 | LOCK WASHER M6 DIN 127B | 9 |
| 6 | BS 512 000 612 | BOLT M6X12 DIN 933 | 6 |
| 7 | BR 202 007 045 | FUEL TUBE | 1 |
| 8 | BT 670 111 130 | HOSE CLAMP 11X13MM | 2 |
| 9 | BM 260 493 629 | FUEL FILTER | 1 |
| 10 | MPA 01 054 930 | PROTECTION EXHAUST | 1 |
| 11 | BS 512 000 830 | BOLT M8X30 DIN 933 | 4 |
| 12 | BS 531 000 800 | WASHER M8 DIN 125 | 8 |
| 13 | BS 502 000 800 | SELF LOCKING NUT M8 DIN 985 | 4 |
| 14 | MPA 01 054 900 | ENGINE PLATE | 1 |
| 15 | BE 412 430 000 | MAINTENANCE METER | 1 |
| 16 | BS 554 101 041 | BOLT M10X45 DIN603 | 4 |
| 17 | MPA 01 054 880 | ENGINE SUPPORT PLATES | 2 |
| 18 | BM 201 314 002 | ENGINE 14HP | 1 |
| 19 | BS 531 001 000 | WASHER M10 DIN 125 | 4 |
| 20 | BS 502 001 000 | SELF LOCKING NUT M10 DIN 985 | 6 |
| 21 | BS 521 100 608 | BOLT UMBRACO M6 | 3 |
| 22 | MPA 01 054 990 | CENTRE PIECE | 1 |
| 23 | MPA 01 055 120 | ELASTIC COUPLING (ENGINE SIDE) | 1 |
| 24 | BA 201 240 000 | ELASTIC COUPLING RUBBER FLECTOR | 1 |
| 25 | BA 201 220 101 | ELASTIC COUPLING ALU FLANGE (PUMP SIDE) | 1 |
| 26 | MPA 01 073 720 | ROTAION MEASURING POINT | 1 |
| 27 | BB 221 005 100 | POP PLUG STEEL 4.8X10 DIN 7337 A | 4 |
| 28 | MPA 01 054 610 | VENTILATOR REINFORCEMENT | 1 |
| 29 | BR 600 225 201 | ANTIVIBRATION BLOCKS 25X20B M6X10 | 3 |
| 30 | MPA 01 054 600 | ENGINE PUMP SUPPORT | 1 |
| 31 | BS 502 000 600 | SELF LOCKING NUT M6 DIN 985 | 4 |
| 32 | MPA 01 054 780 | SUPPORT PUMP SENSOR | 1 |
| 33 | BS 512 000 625 | BOLT M6X25 DIN 933 | 4 |
| 34 | BS 512 000 610 | BOLT M6X10 DIN 933 | 3 |
| 35 | BH 812 249 350 | O-RING Ø 24,99 X 3,53 MM VITON | 1 |
| 36 | MPA 01 311 210 | TAILPIECE | 1 |
| 37 | BS 532 010 356 | WASHER M10X35X3 | 2 |
| 38 | BY 717 212 011 | FUEL TANK 11L | 1 |
| 39 | BH 720 505 585 | CAP FOR TANK | 1 |
| 49 | BS 511 041 125 | BOLT UNF | 1 |



COMMAND INTAKE ROLL – PROF 6 OR

| | | | | | |
|----|-----------------------|-----|---|------|------------|
| NO | MMA 01 054 260 | REV | 1 | DATE | 2020/09/02 |
|----|-----------------------|-----|---|------|------------|

ELIET MANUAL

PROF 6

MMA 01 054 260

COMMAND INTAKE ROLL - PROF 6 OR

| NUMBER | ARTICLE | DESCRIPTION | QUANTITY |
|--------|----------------|--|----------|
| 1 | BS 512 000 820 | BOLT M8X20 DIN 933 | 2 |
| 2 | BS 531 000 800 | WASHER M8 DIN 125 | 9 |
| 3 | MPA 01 440 600 | FIXATION PART | 2 |
| 4 | MPA 01 054 960 | SUPPORT TRACTION LEFT SIDE | 1 |
| 5 | BS 554 100 820 | BOLT M8X20 DIN 603 | 4 |
| 6 | BS 502 000 800 | SELF LOCKING NUT M8 DIN 985 | 8 |
| 7 | BR 112 101 490 | NYLON BUSHING WITH COLLAR (10/14/17.5x1 | 2 |
| 8 | MPA 01 054 170 | COMMAND INTAKE ROLL | 1 |
| 9 | BS 512 000 542 | BOLT M5 | 1 |
| 10 | BS 501 000 500 | NUT M5 DIN 934 | 2 |
| 11 | BS 531 200 600 | WASHER M6 DIN 7349 | 1 |
| 12 | BR 112 060 800 | NYLON BUSHING WITH COLLAR (6/10/15x8.5/2 | 2 |
| 13 | MPA 01 054 950 | SUPPORT TRACTION RIGHT SIDE | 1 |
| 14 | BR 020 501 250 | TUBE CAP Ø 25MM | 2 |
| 15 | BE 120 040 070 | MAGNET MAESTRO | 1 |
| 16 | BV 911 000 050 | COMPRESSION SPRING 1.5 X 15 X 28 | 1 |
| 17 | BS 551 000 830 | EYE BOLT M8X30 DIN 444 | 1 |
| 18 | BS 501 000 800 | NUT M8 DIN 934 | 3 |
| 19 | BA 230 010 800 | BALL JOINT M8 | 2 |
| 20 | MPA 01 054 870 | COMMAND DISTRIBUTION BLOCK | 1 |